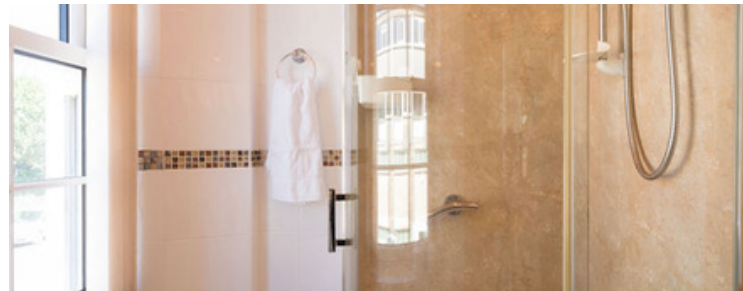




Lynwood - Apartment 1

Lynwood, Church Street, St Mary's,

TR21 0JT



Sleeps 2 | Thursday Change over

- Twin arrangement
- Internet Access
- Convenient location for beaches and Quay

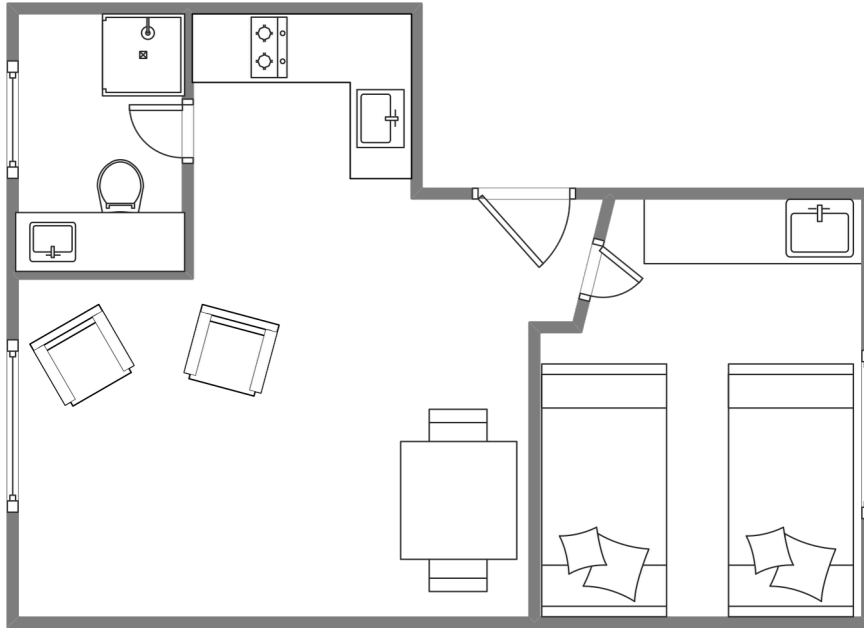
Apartment 1 sleeps 2 people in a twin bed configuration.

Finished to a very high standard and fitted with a fully equipped kitchen, diner, lounge and bathroom, wifi and many extras to make your stay comfortable.

Located in the centre of Hugh Town on St Mary's in the Isles of Scilly, Lynwood has transformed from a successful B&B into this new self catering accommodation.

Perfect for exploring St Mary's, taking day trips to other islands and dining out.

Layout



Getting to the property

Map of St Marys



Directions from the Quay | Walking time: 8-10 minutes

Head towards the entrance to the quay.
Turn left at The Mermaid Inn on to Hugh Street.
Keep to the right side of the road.
Follow the main road past Town Hall.

Head towards Old Museum.
Lynwood Apartments are located opposite church hall,
by your right in the row of houses.
Apartment 1 is on the first floor.

[What3words///bracelet.carriage.bulky](https://www.what3words.com/bracelet.carriage.bulky)

Scilly Self Catering
Lower Strand
Isles of Scilly, TR21 0PS

Enquiries@scillyselfcatering.com
01720 422082
www.scillyselfcatering.com